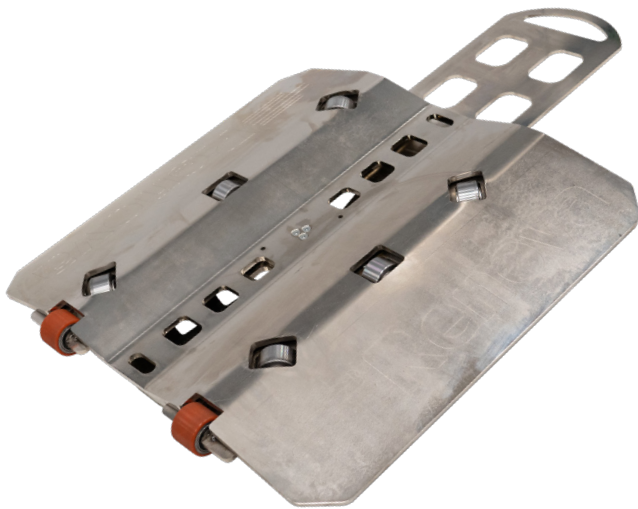


moviroll

ANCILLARY EQUIPMENT

ROTATING PLATE SAFELY ROTATES 360° ANY CYLINDRICAL LOAD



Moviroll ancillary equipment integrates the functionality of pneumatic and battery powered roll pushers, as they support the operator in all operations related to the handling of loads.

In addition to being moved in a straight line, the rolls might need to change direction without compelling the worker to use brute force to rotate them.

Renova's Rotating Plate is a chromed steel plate that allows the operator to reorient paper, cardboard and tissue rolls without effort and in total safety. Used in combination with Moviroll roll pushers, that can lift the roll onto Rotating Plate.

Stable thanks to the 6 support wheels, Rotating Plate smoothly turns 360°, helping everyday operations.

EASY TO CARRY

it can be placed wherever needed, with just one hand

6 SUPPORT WHEELS

the load rotates smoothly, without the need for brute force from the operator

SLIDING HANDLE

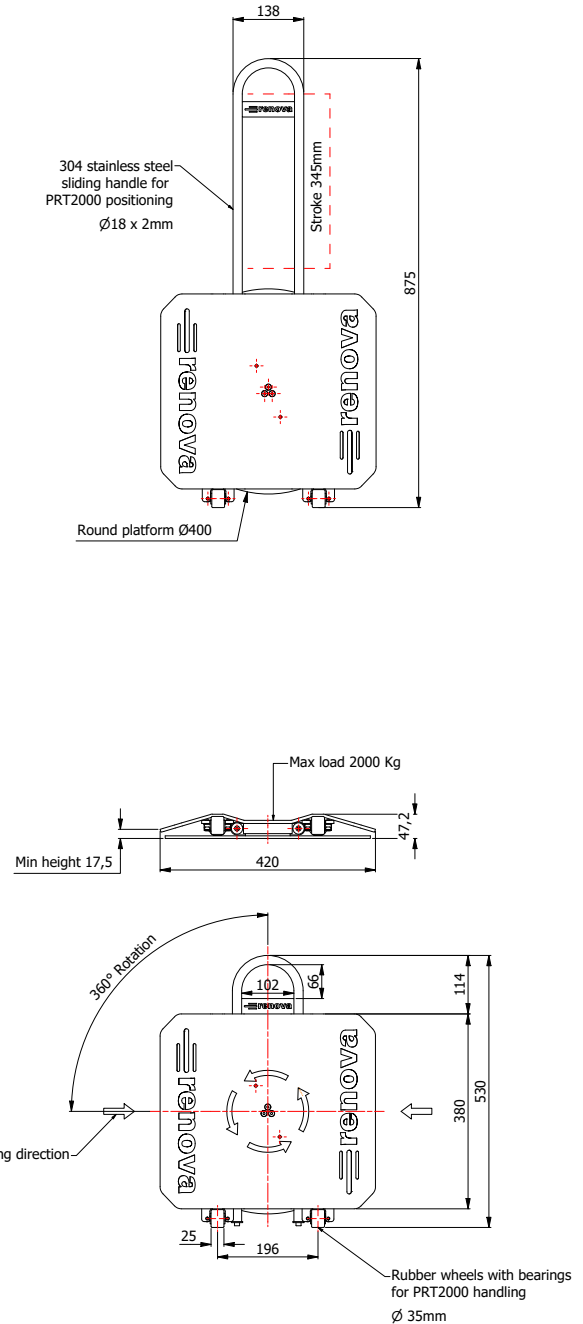
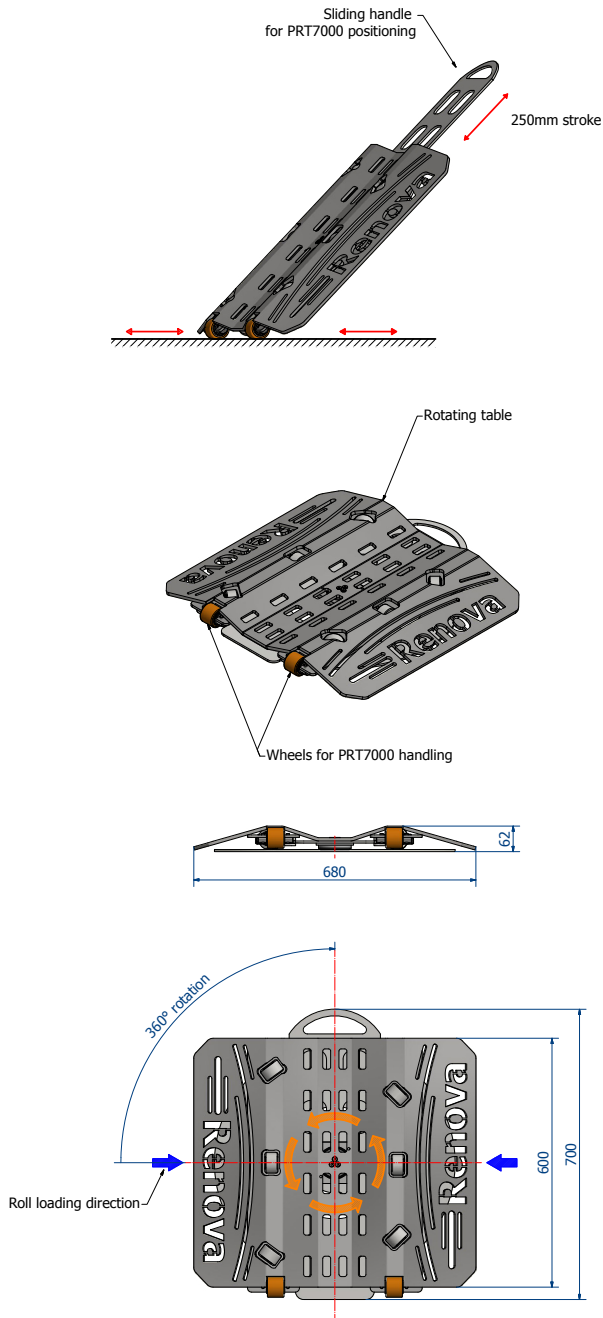
retractable handle for easy storage

ROTATES 360°

to reorient the load in any direction

ROTATING PLATE

Available in 2 different sizes, PRT7000 and PRT2000



model	load capacity	rotation	unit weight	unit dimensions
PRT7000	7000 kg	360°	46 kg	700 x 680 mm
PRT2000	2000 kg	360°	35 kg	420 x 530 mm

renova srl
 registered office : via palmanova 24, 20132 milano - italy
 operational hq: viale rimembranze 93, 20099 sesto s. g., milano - italy
 VAT IT03758670965 | REA MI-1699970 | share capital. €10.000,00

www.renova-srl.com
 support@renova-srl.com
 info@renova-srl.com
 t. +39 02 27007394

